

THE PROJECT

In 2001 DOBER LIDSKY MATHEY (DLM) was retained by Holy Cross to study residential life. Subsequently, apartment housing for 200 students was constructed. In 2006, DLM returned to the College to develop a Campus Plan. The major agenda items related to site improvements as well as additional space for academic, administrative, athletics and recreation, and student life use. The project was led by DLM with SPORTS PLAN Studio contributing to the athletic and recreation part of the study and Carol R. Johnson Associates to the landscape piece.



ILLUSTRATIVE PLAN 2007

CHALLENGE

The Holy Cross campus is built on a steep site with a change of grade across campus of over 260 feet. Because of the terrain, there is little open space for casual meeting and interaction. Building sites are also severely limited, especially for the types of facilities that are required.

Next to outdoor gathering space, additional student housing is of prime importance. This will allow the College to lower the density of existing housing while accommodating a higher percentage of students on campus. Athletic and recreation space is also a high priority. Venues that are needed include a field house with a 200-meter track, a football practice facility, improved performance arenas and training support, and improved outdoor fields. The most pressing academic need is for better space for the Music, Theatre, and Visual Arts departments.

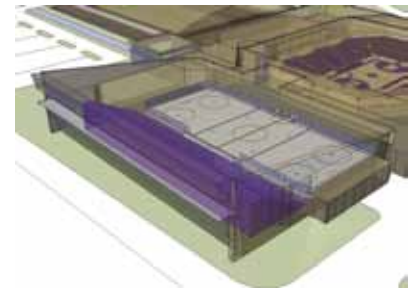
SOLUTION

At the core of the Campus Plan is improved outdoor space. To achieve this, the campus road system will be altered, limiting some segments to emergency and service vehicles only. A series of landscaped gathering spaces can then be developed. To enhance the College's image to the public, campus gateways will mark the four entrances to campus.

Housing for up to 300 students will be built in both residence hall and apartment formats. The existing athletics complex will be expanded and renovated, and a football practice facility will be built near the existing stadium. The existing field house will be renovated for recreational activities. The Campus Plan reserves a site at the formal entrance to campus for a Performing and Fine Arts Center. With these improvements space can be reassigned to meet other academic and administrative facility needs.



LANDSCAPE SKETCH
CAROL R. JOHNSON ASSOCIATES



HART CENTER RENOVATION DIAGRAM
SPORTS PLAN STUDIO

RESULTS

Holy Cross intends to begin the Campus Plan implementation with additional housing and additional athletic facilities. Of equal importance are the site improvements that will redirect vehicular access and support a pedestrian campus.

*Project completed under previous name: Dober, Lidsky, Craig and Associates, Inc.

REFERENCE

Scott M. Merrill
Director of Physical Plant
508 793 2438
smerrill@holycross.edu

PRINCIPAL IN-CHARGE

Arthur J. Lidsky, AICP, FAAAS
Study Director



DOBER LIDSKY MATHEY
CREATING CAMPUS SOLUTIONS